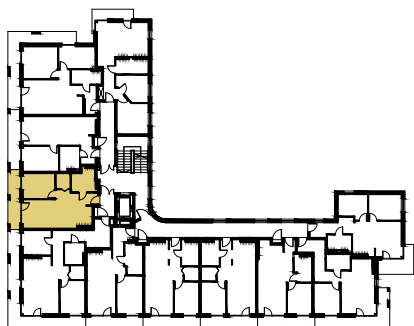
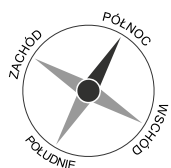
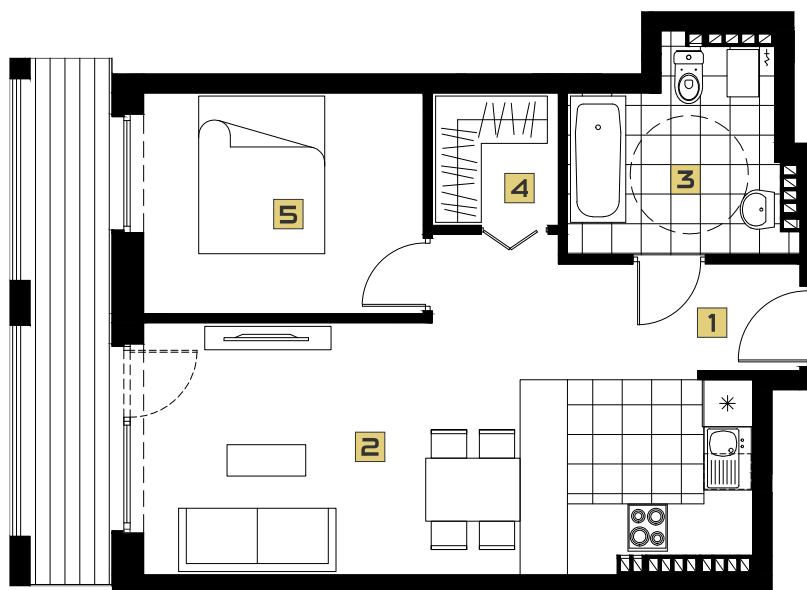




47,77 m²
powierzchnia

BUDYNEK A
PIĘTRO 4
APARTAMENT 48

| | | |
|----------|--------------------------------------|----------------------------|
| 1 | PRZEDPOKÓJ | 1,76 m² |
| 2 | POKÓJ Z ANEKSEM KUCHENNYM | 26,91 m² |
| 3 | ŁAZIENKA | 6,47 m² |
| 4 | GARDEROBA | 2,69 m² |
| 5 | SYPIALNIA | 9,94 m² |



5 m

2 m

1 m